

**From:** [REDACTED]  
**To:** [Norfolk Boreas](#)  
**Subject:** Oulton Parish Council - Boreas ref 20022619 - deadline 14 submission  
**Date:** 25 August 2020 11:31:01  
**Attachments:** [equinor-socc-200702.pdf](#)  
[OPC deadline 14 SEPDEP consultation leaflets.pdf](#)  
[BOREAS-OPC-D 14-final 1.docx](#)

---

Dear Sian Evans,

Please find attached Oulton parish Council's deadline 14 response to ExQ5 written questions.

Also attached are two documents containing consultation documents for Equinor Sheringham & Dudgeon Extension project which also form part of OPC's response to ExA written questions.

Many Thanks,

Regards,

Susan Mather

PP Oulton Parish Council



equinor

# Sheringham and Dudgeon Extension Projects

Statement of Community Consultation

July 2020

Published in accordance with Section 47 (1) of the Planning Act 2008

# 1. Introduction

**Equinor has been operating in Norfolk for close to a decade. Our existing offshore wind farms, Sheringham Shoal and Dudgeon provide enough electricity to power around 750,000 UK homes.**

We are now seeking a common Development Consent Order (DCO) for two new projects: Sheringham Extension Project (SEP) and Dudgeon Extension Project (DEP), collectively known as the Sheringham and Dudgeon Extension Projects (the 'Extension Projects'). Although these are two separate offshore wind farm extension projects, at Equinor we have adopted a strategic approach to developing the projects jointly to minimise local impacts. We will apply for a common DCO for the Extension Projects and will consult on both projects together.

With the potential to generate renewable power for 820,000 UK homes, the Extension Projects will make an important contribution to the UK's legislated decarbonisation targets and efforts to tackle climate change.

Your views matter to us at Equinor. We develop our projects responsibly by engaging with communities and understanding the local environment as the plans evolve. We welcome your feedback and comments to our plans for the Extension Projects.

This document, known as a Statement of Community Consultation (SoCC), outlines how we intend to keep you informed and how you can provide your feedback on our proposals for the Extension Projects, as required under the Planning Act 2008.

# 2. About us

Sheringham Shoal Offshore Wind Farm and Dudgeon Offshore Wind Farm are owned by two separate joint venture partnerships known as Scira Offshore Energy Ltd. and Dudgeon Offshore Wind Ltd., respectively. At Equinor, we are involved in both joint venture partnerships and we act as the operator for both offshore wind farms. On behalf of both these partnerships, we are bringing the two Extension Projects together as part of one application for development consent, which forms the Sheringham and Dudgeon Extension Projects.

Headquartered in Norway, we are a broad energy company and have been a major provider of energy to the UK for 40 years. We power over one million homes across Europe with renewable energy from our existing offshore wind farm projects in the UK and Germany. Our current UK offshore wind farms provide enough renewable electricity to power over 750,000 UK homes. We are proud to support local skills, utilise local suppliers and support local projects.



### 3. Sheringham and Dudgeon Extension Projects

SEP is planned to have a generating capacity of up to 317 megawatts (MW), while DEP is planned to have a capacity of up to 402 MW. The Extension Projects will be located next to each respective existing wind farm, with SEP being approximately 17.5 kilometres (km) (11 miles) offshore at the nearest point to shore, and DEP being approximately 31 km (20 miles) offshore at the nearest point to shore.

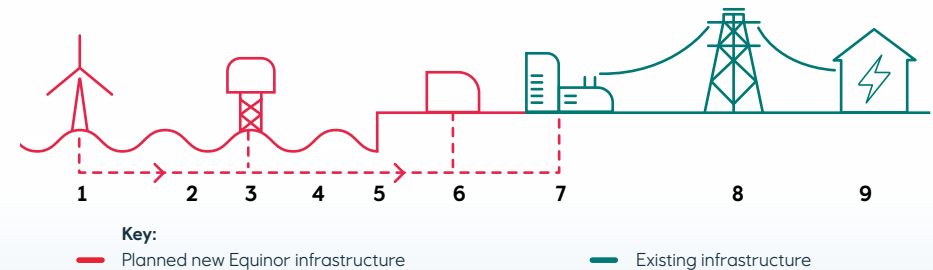
As part of the common DCO application, the Extension Projects have a shared point of connection at the existing National Grid Norwich Main Substation. With this approach we seek to minimise potential impacts on the community and environment by adopting a shared onshore footprint for the Extension Projects.

The Extension Projects will include the following new infrastructure:

- Offshore wind turbines and foundations.
- Interarray and interlink cables to connect the offshore wind turbines to an offshore substation.
- Up to two offshore substations and foundations.
- Offshore subsea export cables and scour protection.
- Landfall.
- Onshore export cables.
- Up to two onshore substations.
- A grid connection point at the National Grid Norwich Main Substation.
- Other associated development such as site access, utilities and potential landscaping/screening.

The graphic below provides an overview of the typical components of an offshore wind farm.

1. Offshore wind turbines
2. Interarray and/or interlink cables
3. Offshore substation(s) (Alternating Current (AC))
4. Offshore export cables
5. Cable landfall and onshore export cables
6. Equinor onshore substation(s)
7. Existing National Grid Substation
8. Existing National Grid power lines
9. UK homes



## 4. Our onshore proposals

Electricity generated by the Extension Projects offshore will be brought ashore via subsea cables and will reach the coastline at Weybourne. They will then be installed in a trench heading south towards our new onshore substation area near to the existing National Grid Norwich Main Substation.

### Landfall

Supported by initial environmental assessments, we were previously evaluating two potential locations for where the offshore cables would come ashore, Weybourne and Bacton. After further technical and environmental analysis, Weybourne has been selected as the landfall point.

We published a Scoping Report in October 2019, which presented the project search area. We are currently assessing the best cable route and options to locate the onshore substation(s). We will be seeking your feedback to help shape our plans during our consultation process.

### Onshore cable corridor search area

We will refine the current 1 km (roughly 0.6 miles) wide onshore scoping boundary for the onshore export cables. Since we published our Scoping Report, we have undertaken environmental and technical assessments and are considering options outside of the 1 km wide scoping boundary to explore:

- o Routing the onshore cabling to the south of Weybourne, where the cables come ashore.
- o Crossing the River Bure via trenchless Horizontal Directional Drilling (HDD) methods.
- o Crossing existing onshore cabling for other offshore wind developers in the area.
- o Crossing existing proposed developments, including local road network improvements and housing developments.

### Onshore substation area

We are assessing options for the location of the onshore substation area. Our preferred option is to use one common substation, however if the projects are built in phases, up to two substations may be needed within the same footprint. We are assessing options within a 3 km (roughly 1.9 miles) radius of the existing National Grid Norwich Main Substation.

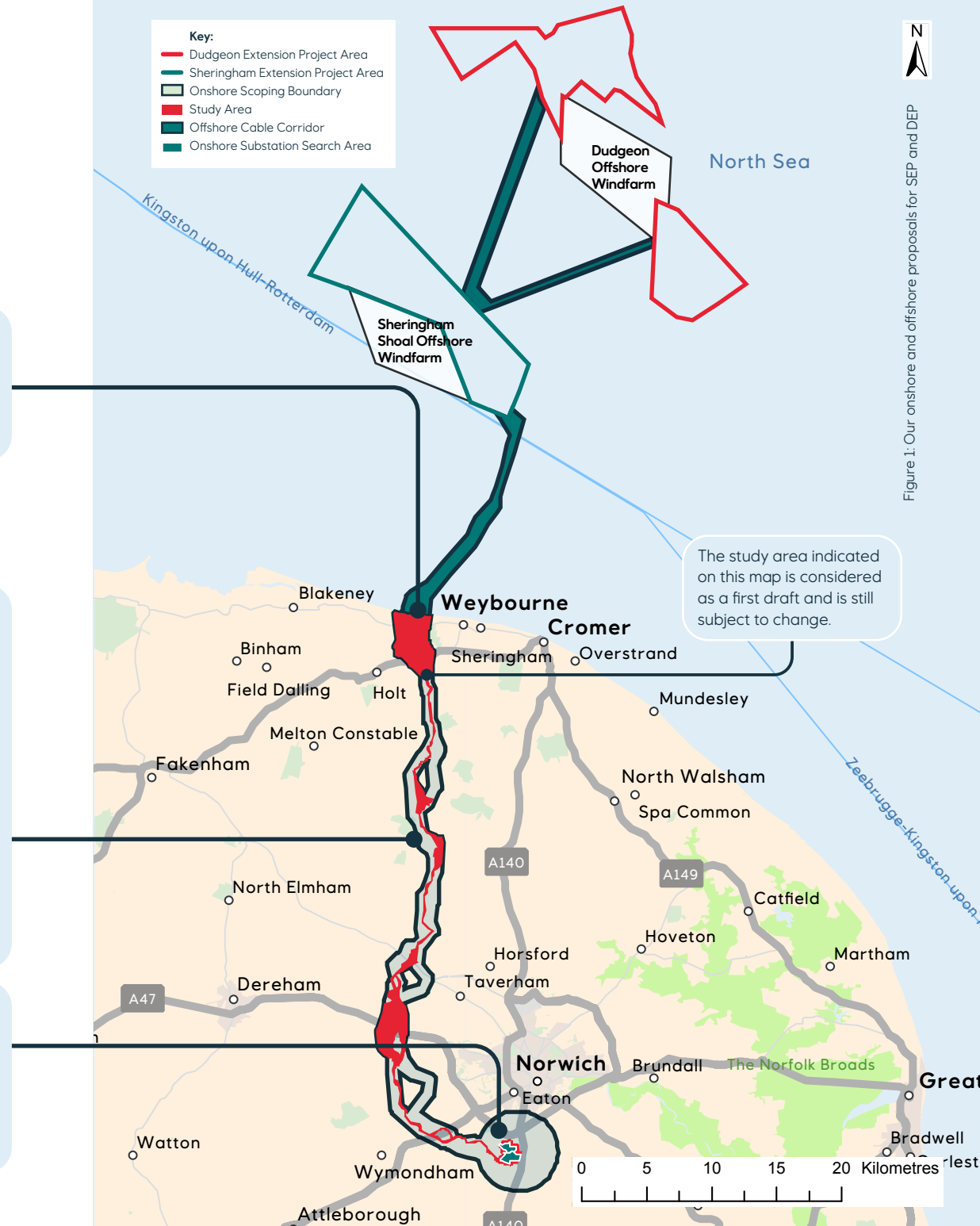


Figure 1: Our onshore and offshore proposals for SEP and DEP

The study area indicated on this map is considered as a first draft and is still subject to change.

## 5. Our public consultation

As set out in **Section 8**, we are dedicated to using a wide variety of communications methods to ensure we can continue the conversation on the Extension Projects and involve all members of the community.

### Our consultation process

The consultation process for the Extension Projects will be an iterative one as the feedback and information we receive will help inform the refinement of project options. Our consultation will consist of at least two phases of consultation, including:

- **A phase one consultation**, lasting 6 weeks, from 09 July to 20 August 2020
- **A phase two consultation**, lasting 6 weeks, indicatively planned for spring 2021

### Phase one public consultation

During phase one, we will invite feedback to our proposals to help inform our site selection process for the location of the onshore substation area and refinement of the onshore cable corridor. We will analyse all of the feedback we receive and, together with information from our environmental surveys and as well as discussions with technical stakeholders, we will further refine our proposals.

**The phase one consultation will be open to all interested members of the public and will feature digital and non-digital methods for engagement as outlined in Section 8.**

### Phase two public consultation

This consultation, in accordance with section 47 of the Planning Act 2008, will allow us to update you on our project plans, including how the feedback we received during the phase one consultation has been considered as we developed our proposals for the Extension Projects.

At our phase two consultation, we will consult on our refined plans together with the results from our environmental surveys and studies, which will be published in our Preliminary Environmental Information Report (PEIR). This will include detailed landscape and seascape visualisations of the proposals.

### Ongoing engagement

We will be seeking to continue the conversation on our proposals by convening dedicated working groups, which will be established with the advice of the local planning authorities.

Local knowledge is important to us, and we will consider the feedback and comments we receive on an ongoing basis and incorporate these within our proposals where possible.

### Interim reporting

We will publish a consultation summary report after each phase of consultation to keep the community updated as to how their feedback has been considered in the development of the plans for the Extension Projects.

### Consultation Report

As part of the DCO application due to be submitted by the end of 2021, we will publish a Consultation Report that:

- Describes the consultation process.
- Explains how we have sought to comply with the relevant legal requirements to consult.
- Details how we have worked with local planning authorities to ensure our consultation is suitable for the area.
- Provides a summary of the feedback and consultation responses we have received.
- Responds to the feedback we have received, including explaining how your feedback has influenced our proposals.



## 6. What will we consult on?

The overriding aim of our public consultation on the Extension Projects is to ensure that both community and technical consultees have a chance to understand, comment and inform the proposals.

The feedback from our community consultation will help us to mature our plans for the Extension Projects. We are asking for comments from an early stage of development so we can develop a deeper understanding of key issues in the community and can take them into account as the project evolves. This will be part of an ongoing dialogue with communities, during which we will welcome all kinds of feedback.

We encourage local communities to give their views about how the Extension Projects may affect them or their local area. We will be seeking feedback to help develop our proposals regarding, but not limited to:

- Our site selection process for the location of the onshore substation area and refinement of the onshore cable corridor search area.
- The offshore environment including consultation with the Marine Management Organisation (MMO) and commercial fisheries organisations.
- Short-term and temporary impacts during construction, such as traffic movements, local amenities and the environment.
- Long-term operational considerations, such as on the local environment, landscape and visual amenity.

At each phase of consultation, we will give the community the opportunity to discuss details of the Extension Projects with the project team via our consultation methods listed in **Section 8**.

## 7. Who will we consult?

This consultation is open to anyone who may be interested or in any way feels impacted by our proposals for the Extension Projects. Our communication channels (listed in **Section 8**) can be used by interested parties to get in touch with us to find out more information and make comments.

We have spoken to the local planning authorities (LPAs) about plans for the Extension Projects, to help us develop our understanding of the area and surrounding communities. This mapping of the local area has informed a consultation area to guide our consultation process. This area has been divided into two separate zones:

**A core consultation zone**, which extends by a minimum distance of 1,000 metres either side of the onshore project search area (shown in **Figure 2**). This ensures that all individuals and stakeholders identified within a minimum distance of 1,000 metres from any associated underground or overground infrastructure are consulted. This will guide the refinement of the core consultation zone together with any project search area changes, which may include the refinement of route options and the selection of preferred sites for project infrastructure, such as the onshore substation area. Properties within the core consultation zone will directly receive communications such as leaflets and newsletters from us in the post.

**A wider consultation area**, as we recognise that there may be some interested individuals or parties who are not within the core consultation zone. We are committed to ensuring that these interested parties still have an opportunity to view our proposals and have their say. We will notify communities within the wider consultation area by advertising in local media and using social media. Informative consultation materials will be published online and available to view and collect via our contact details.

Throughout the development of our proposals, we will continue to work with local planning authorities to identify any relevant community groups, business organisations and area committees who should be consulted. As well as the community consultation, we will be discussing the Extension Projects with a range of statutory and non-statutory consultees, including:

- Owners, tenants and occupiers of the land included within the DCO application.
- MPs, local authorities and parish councils.
- Statutory stakeholders, such as Natural England, the Environment Agency and Historic England.
- Intertidal groups and users such as fisheries and marine organisations.
- Local interest and community groups.
- Local interest and community groups in the coastal area with a particular interest in seascape visual amenity.

### Hard to reach groups

We have developed our consultation to be accessible to all groups in the community. This is particularly important in the current situation where public gatherings are restricted in line with government guidance and health protection measures because of COVID-19. The approach to consultation outlined in this SoCC seeks to offer an inclusive range of communications methods for conducting an open and meaningful consultation across the community during the COVID-19 pandemic and in the instance of any future recurring or regional lockdown measures.

Our consultation methods, described in **Section 8** of this SoCC, set out the use of digital engagement methods and also how we will consult with those without digital access. We recognise that some individuals or groups may have difficulties taking part in the consultation process for a range of reasons. We have identified a number of organisations representing hard to reach groups in the consultation area. These organisations will be contacted at the start of each consultation phase to ensure that our approach best meets the needs of its members. Please see a list of these organisations included in **Annex A** (accessible via our consultation website [sepanddp.commonplace.is](http://sepanddp.commonplace.is)).





Figure 2. Core and Wider Consultation Zones



## 8. How will we consult?

Our consultation activities include a range of methods to ensure our consultation can be accessed by all members of the community, which is especially important given current restrictions on meeting in person owing to the COVID-19 pandemic.



### Open communication

**A Freephone information line** is available for interested parties to call to ask questions and provide feedback: 08081 963673 (open 09:00 – 17:00. A voice message service will operate for out of office hours and all enquiries will be acknowledged within 24 hours).

**A project email address** is open for questions and comments: info@sepanddep.co.uk

**A freepost address** is also open for letters and feedback forms to be sent, free of charge to: FREEPOST DUDGEON AND SHERINGHAM EXT

**Our dedicated Community Liaison Officer**, Nigel Tompkins, is based locally in North Norfolk and can be contacted: nigel@ni4b.co.uk and 01263 822427 / 07860 206565



### Consultation website

**A dedicated consultation website** is live for you to find out more information and provide your feedback: [sepanddep.commonplace.is](https://sepanddep.commonplace.is). This includes access to our digital engagement platform (see below for details). Any virtual exhibitions will be accessible via this website.



### Digital engagement

**Our digital engagement platform** will present our plans digitally via our consultation website. This will allow you to pin your feedback to an interactive map of the projects areas and see views from other members of the community. The aim of this platform is to provide a wide-reaching and continuous way of engaging with anyone interested in the Extension Projects.



### Events

**Consultation events** will be held where possible, offering you the opportunity to discuss our proposals with us and give your feedback. Where there are restrictions on public gatherings, these events will be delivered by virtual exhibitions available through our consultation website.

**Stakeholder meetings** and briefing sessions may be arranged with your local parish councils and with key local stakeholder groups. These meetings will be held via online meetings and webinars in circumstances where there are restrictions on public gatherings.



### Literature

**Stakeholder briefing packs** have been provided to elected representatives at the start of the consultation to introduce the scheme and inform them of how we will engage with their constituents during the process.

**Consultation leaflets** will be distributed to all properties in the core consultation zone via post. They will also be made available for the wider consultation area online via the website, upon request and at local distribution points (where possible to access – see Section 13). Leaflets will provide information on the proposals and how people can have their say.

**Feedback forms** will be distributed with our consultation leaflet to all properties in the core consultation zone via post. They will also be made available for the wider consultation area online via the website, upon request and at local distribution points (where possible to access – see Section 13).

**Newsletters** will be available online and distributed regularly via post in the core consultation zone to update residents on the plans and proposals. Copies of all of our consultation materials can be requested in hard copy form where not already provided. The materials can also be requested in alternative formats such as large print, audio or braille formats.



### Advertising

**Local media** will publish adverts to inform local communities of our consultation. Local information points will host posters containing information on how to get involved.

**Social media** will inform local communities of our consultation and invite feedback.

## 9. Environmental information

Equinor will be undertaking a robust Environmental Impact Assessment (EIA) in accordance with the Planning Act 2008 (as amended by the Localism Act 2011) and the Infrastructure Planning (EIA) Regulations 2017 (the EIA Regulations). The methodology and scope of the EIA and how it will be carried out will be agreed with the relevant regulatory and environmental bodies (such as Natural England), the Planning Inspectorate (hereby PINS) and your local planning authority throughout the development of our plans for the Extension Projects.

The following reports will be made available electronically and on our consultation website as part of the EIA process and as the DCO application is prepared:

**Scoping Report** – Our Scoping Report was published in October 2019 and described the process we will undertake to assess any potential impacts onshore and to the existing environment. Feedback on this from the local planning authorities and statutory consultees resulted in a Scoping Opinion which was published by PINS in November 2019. Both of these documents are available to view on PINS website: <https://infrastructure.planninginspectorate.gov.uk/projects/eastern/sheringham-and-dudgeon-extension-projects/>.

As described in **Section 4** of this SoCC, we have since undertaken environmental and technical assessments and are exploring options for the onshore cable corridor search area outside of the initial 1 km wide scoping boundary, also shown in **Figure 1**.

A more detailed plan is included in an EIA Scoping Extension document on the Equinor project website at <http://sheringhamshoal.co.uk/extensionproject/documents><sup>1</sup>. We will be consulting on the onshore cable corridor search area as part of our phase one consultation.

<sup>1</sup> This document will also be available on the Dudgeon website at: <http://dudgeonoffshorewind.co.uk/extensionproject/documents>

**Preliminary Environmental Information Report (PEIR)** – The PEIR will build upon the findings from the scoping phase and the feedback received through our consultation process. It will incorporate the findings of the surveys and initial assessments that have been carried out and will provide more details about the design of the onshore substation area and onshore cable corridor.

Our environmental surveys began in May 2018 and will run until approximately spring 2021. At our phase two community consultation, we will be seeking feedback from local communities and all other stakeholders on the findings of these surveys in our PEIR.

**Environmental Statement (ES)** – The ES will advance the content of the PEIR and continue to incorporate the responses from the consultation and results of the surveys undertaken. It will also describe any changes made to the projects and any mitigation measures that need to be implemented. The ES will form part of the DCO application.



## 10. The planning process

SEP and DEP are classified as a Nationally Significant Infrastructure Projects (NSIPs) as each project has a proposed generating capacity of over 100 MW. As the Extension Projects are NSIPs we must apply for a Development Consent Order (DCO).

The DCO application will be dealt with by PINS, the agency responsible for managing the examination process for NSIPs. If the application is accepted, it will be examined by an independent Examining Authority, who will then make a recommendation to the Secretary of State (SoS) for Business Energy and Industrial Strategy (BEIS). The SoS will then review and comment on this before making a decision on whether to grant a DCO.

For more information on this process or advice on how to respond to our pre-application consultation, you can access PINS' advice note (eight) at:

<https://infrastructure.planninginspectorate.gov.uk/legislation-and-advice/advice-notes/><sup>2</sup>



### Pre-application

Equinor must consult with the community and statutory consultees (such as the local planning authorities and Natural England) in compliance with the Planning Act 2008. To demonstrate this to the Planning Inspectorate, we will submit a Consultation Report alongside the DCO application, containing details of our method for consulting, the feedback submitted in response to the consultation and how this has influenced our proposals.



### Acceptance

The Planning Inspectorate, on behalf of the Ministry of Housing, Communities and Local Government has 28 days to decide whether the DCO application meets the required standards to proceed to examination, including whether the applicant's consultation has been adequate.



### Pre-examination

You can register as an interested party – you will be kept informed of progress and opportunities to put your case forward. Inspectors will hold a preliminary meeting and set the timetable for examination.



### Examination

You can send your comments in writing. You can request to speak at a public hearing. The Planning Inspectorate has six months to carry out the examination.



### Decision

A recommendation to the Secretary of State will be issued by the Planning Inspectorate within three months of the end of the examination. The Secretary of State then has a further three months to issue a decision on the proposal.

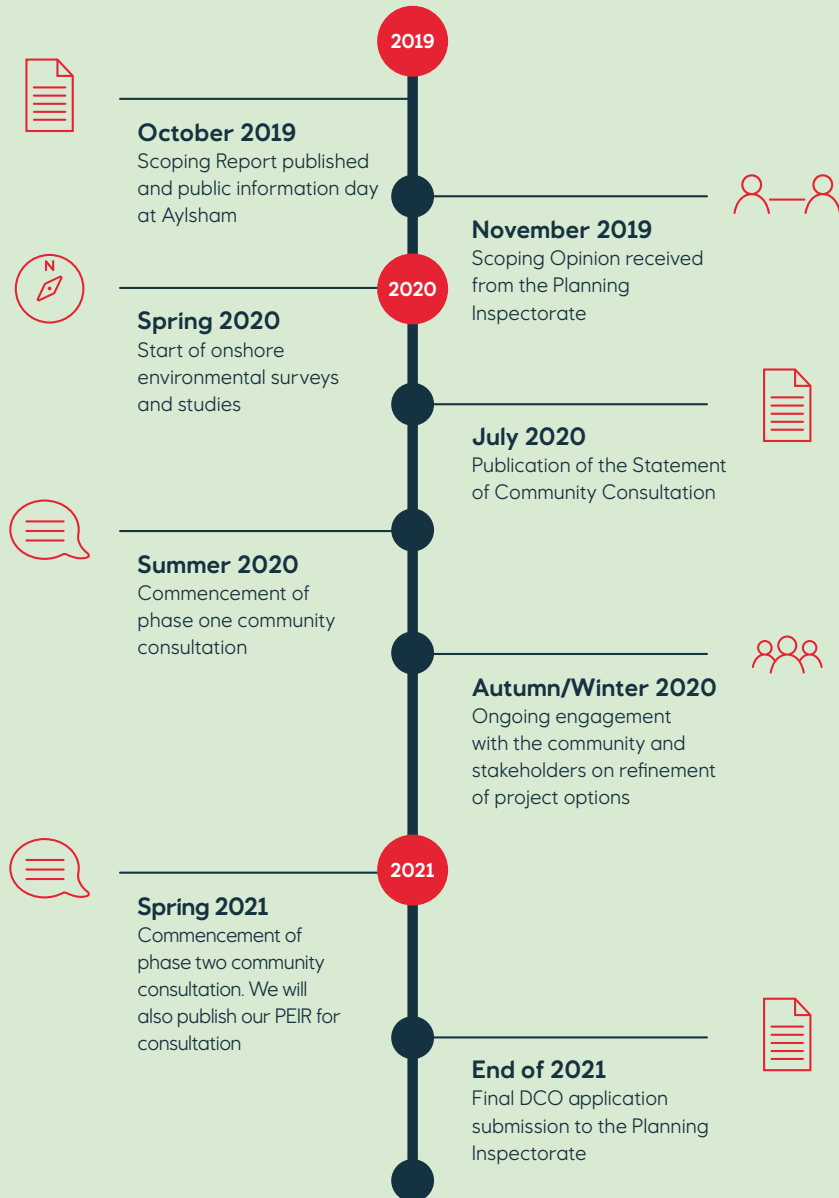


### Post-decision

Once a decision has been issued by the Secretary of State, there is a six-week period for legal challenge on the decision.

<sup>2</sup> Please contact us at the contact information in Section 14 should you wish to request a hard copy.

## 11. Community consultation timeline



## 12. Phase one consultation details

We welcome you to our phase one community consultation as detailed below. Due to government restrictions and guidance on social distancing, our consultation events will be provided via a virtual platform hosted on our consultation website at [sepanddep.commonplace.is](http://sepanddep.commonplace.is). If it becomes possible to hold face to face events in addition to this virtual consultation, and we decide to do so having consulted with the relevant local planning authorities, this will be publicised in local media and other means.

Our phase one consultation period will run between **09 July and 20 August 2020**. We welcome all comments to our phase one consultation during these dates.

During this consultation period, the latest information about the Extension Projects can be viewed at our virtual exhibition space. This can be viewed and accessed via our consultation website.

If you are unable to view information at our virtual exhibition space, or do not have internet or computer access, you can speak to one of the members of our project team to answer any of your questions and provide your feedback by calling **08081 963673** or writing to us at **FREEPOST DUDGEON AND SHERINGHAM EXT.**

## 13. Community access points

All of our consultation documents will be available to view and download from our consultation website. Alternative methods of receiving documents can also be arranged at no extra cost for those without computer or internet access.

Documents may also be requested in alternative formats such as large print, audio or braille formats. To do this, please contact us at the details listed in Section 14.

As and when government guidance allows for public buildings to open, and hosting public documents does not produce a health hazard, we will display hard copies of the consultation documents, or ensure that there is computer access to those documents at publicly available locations. These locations will be advertised accordingly at the time.

## 14. Contact us

Our consultation team is on hand to take your questions and register your comments on the proposals for the Extension Projects.



**Email us at:**  
[info@sepanddep.co.uk](mailto:info@sepanddep.co.uk)



**Call our freephone information line at:**  
08081 963673



**Visit our consultation website at:**  
[sepanddep.commonplace.is](http://sepanddep.commonplace.is)



**Write to us at:**  
FREEPOST DUDGEON AND SHERINGHAM EXT



**Follow us on Twitter at:**  
[@Equinor\\_UK](https://twitter.com/Equinor_UK)

### Landowner interests

If you are a landowner, have an interest in any of the land which interacts with our proposals, or if you have any questions relating to land interests in the area, please contact the Dudgeon and Sheringham Extension Projects Land Team at Dalcour Maclaren by:



**Calling: 01869 352725**



**Emailing: [equinor.ukextensions@dalcourmaclaren.com](mailto:equinor.ukextensions@dalcourmaclaren.com)**



Alternatively, you can write to Simon Hinchliffe or Rhiannon Price at: **Dalcour Maclaren, 1 Staplehurst Farm, Weston on the Green, Oxfordshire, OX25 3QU**

**If you would like this document in large print, audio or braille formats, please contact us using the details above.**

## Equinor in Norfolk

We have been operating in Norfolk for close to a decade. Over 100 employees are based here, operating our existing wind farms, Sheringham Shoal and Dudgeon, which together provide enough electricity to power around 750,000 UK homes.

We are committed to continuing our good cooperation with communities in Norfolk during the development of the Extension Projects. Our existing wind farms have established funds to support community life in the areas of Norfolk in which they operate. The Sheringham Shoal Community Fund and Dudgeon Community Fund both operate and allocate funds independently via the Norfolk Community Foundation on an annual basis.

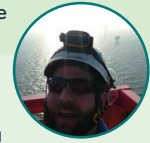
Through our Sheringham Shoal Community Fund, £100,000 per annum is made available for grant awards for successful community initiatives. Through our Dudgeon Community Fund, we have established a Science, Technology, Engineering and Mathematics (STEM) programme, which makes £100,000 available each year for the duration of the programme to kick-start projects that benefit pupils aged 12-16 years.

Neatherd High School in Dereham, Norfolk, was able to purchase 3D printers for its Design School initiative, thanks to a grant from the fund. The printers are now being used by those students still in school to produce PPE visors for NHS staff. Jason Chapman, Head of Design Technology at Neatherd High School said:

"It would have been impossible to fund this initiative from internal resources, so my colleagues and I are extremely grateful to the Dudgeon Community Fund for this grant."

 **For further information**, please continue to look around our exhibition space.

### Matthew Bramwell - Operations and Maintenance Leader at Dudgeon Offshore Wind Farm



**" I work for Equinor at our office based in Great Yarmouth. My role is overseeing operations and to ensure that both planned and corrective maintenance works are carried out safely and efficiently offshore. I was born in Norfolk and am currently based in Gorleston-on-Sea.**

I started my career via an apprenticeship, gaining engineering qualifications from Lowestoft College and EAGIT, an engineering and industrial training centre based in Norwich. Following my apprenticeship, I have worked for a local company in Great Yarmouth for offshore oil and gas platforms, but quickly moved to working as Project Engineer for offshore wind scopes when the presence of offshore wind grew in the UK and Europe.

I have worked on various wind farms around the UK and on large wind projects, including Sheringham Shoal. At Sheringham Shoal, I saw that Equinor operated with a high focus on safety and welfare, and they put people first as the most important asset, so I applied for a job with Equinor directly in 2015.

I have worked from the beginning of the Dudgeon project and have seen how important the local area is for Equinor. There are obvious visible things: projects funded from our community fund, using local contractors to provide services on and offshore, and, of course, locally employed staff. But there are also less visible things such as local companies used to supply food to the base, local B&Bs and hotels used by travelling personnel, using the training centres and offshore businesses that bring more jobs to the area.



**Our existing offshore wind farms off the Norfolk coast provide around 100 local jobs.**



**Since the launch of our Sheringham Shoal and Dudgeon Community Funds, we have awarded grants of over £1 million to support community projects and education initiatives in Norfolk.**

## Introducing the Extension Projects

Equinor is bringing forward proposals to extend both Sheringham Shoal and Dudgeon offshore wind farms, located off the Norfolk coast.

The Sheringham Shoal Extension Project (SEP) is planned to have a generating capacity of up to 317 megawatts (MW), while the Dudgeon Extension Project (DEP) is planned to have a capacity of up to 402 MW. Together, the projects are known as the Extension Projects.

This means the Extension Projects will have the potential to generate a combined **719 MW** of renewable energy. At Equinor, we have adopted a strategic approach to developing the Extension Projects together to minimise onshore and offshore impacts.

### Who we are

- Headquartered in Norway, we are one of the world's largest offshore wind developers.
- Our current UK offshore wind farms provide enough renewable electricity to power over 750,000 UK homes.
- We have been operating in Norfolk for close to a decade.
- We are proud to utilise local suppliers and support local skills.

The Extension Projects will:



**Provide clean, renewable energy to power 820,000 UK homes.<sup>1</sup>**

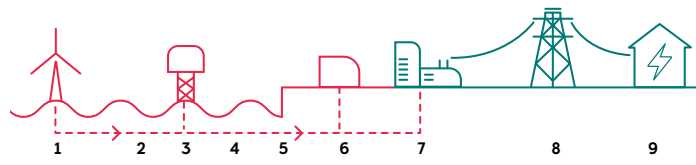



**Increase opportunities for the local supply chain and economy.**

## Components of a typical offshore wind farm

The graphic below provides an overview of the typical components of an offshore wind farm.

1. Offshore wind turbines
2. Interarray and/or interlink cables
3. Offshore substation(s) (Alternating Current (AC))
4. Offshore export cables
5. Cable landfall and onshore export cables
6. Equinor onshore substation(s)
7. Existing National Grid Substation
8. Existing National Grid power lines
9. UK homes



 **For further information**, please continue to look around our exhibition space.

<sup>1</sup> Based on BEIS 2019 carbon conversion factors.   
 \*Graphic not to scale, for illustrative purposes only.

## Our approach to construction

The Extension Projects are two separate offshore wind farm projects, with separate ownership structures. We have adopted a strategic approach to developing them by applying for a common Development Consent Order (DCO) and consulting on both projects together. To minimise impacts on the community and the environment, we are seeking to use a shared onshore footprint for both of the Extension Projects.

However, because Sheringham Extension Project (SEP) and Dudgeon Extension Project (DEP) are separate projects with separate ownership structures, each will be subject to its own Final Investment Decision (FID), which means a phased construction of the projects could be required. Because of this, the DCO application will include the provision for three scenarios:

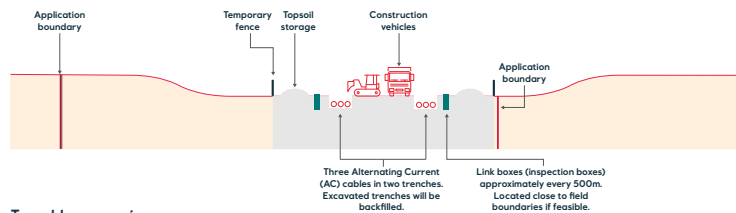
1. Both of the Extension Projects being constructed at the same time with a shared offshore substation, a shared onshore substation and shared cable trenching (our preferred approach).
2. Just one of the projects being constructed.
3. Separate cable trenching, onshore substations, offshore substations and construction periods for each project – however this will remain within the same shared project footprint.

To help mitigate any disruption during construction, we are currently developing an Outline Code of Construction Practice (CoCP), which will be submitted as part of the DCO application. This will contain management measures that contractors will be required to adopt and implement for all construction activities associated with SEP and DEP.

Under the scenario of phased construction activities, onshore cabling required for the first extension project would be constructed initially along with all associated electrical infrastructure.

### Open-cut trenching

Onshore cables are typically installed using an open-cut method. This includes the removal of topsoil excavating the trench, installing the ducts and backfilling the trench, with land reinstated back to its previous condition.



### Trenchless crossings

We are also considering trenchless methods at certain points along the cable route. One technology we could utilise is horizontal directional drilling (HDD), a trenchless method of installing underground cables that ensures minimal impact on the surface and minimal disruption to sensitive features.

HDD could be undertaken at landfall along with infrastructure such as major river, roads, railways, woodlands, pipelines, and other sensitive areas.



Are there any experiences from the construction of the existing Sheringham Shoal and Dudgeon Wind Farms which you think we could learn from?

**Have your say** via our website.



## Our consultation process

Throughout the consultation process for the Extension Projects, we are committed to working with local communities and stakeholders to help shape our proposals. We are engaging early to seek feedback on our proposals and create an open and meaningful conversation.

Wherever possible, we will use local knowledge to inform and refine our approach – we want to understand the issues that are important to you, as well as hear any suggestions you have as to how we can improve our plans for the Extension Projects.

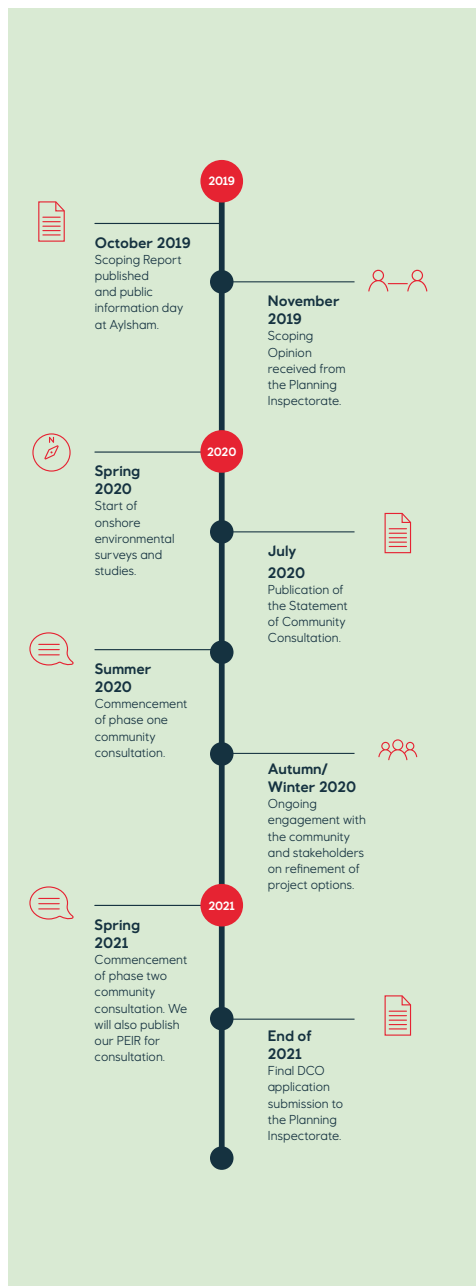
We will be holding two rounds of community consultation. During this phase one consultation, we are inviting feedback on our proposals, which will help inform our site selection process for the location of the onshore substation area, and the refinement of our onshore cable corridor.

Feedback will be taken into account on an ongoing basis as we develop our proposals.

When the proposals reach a more developed stage, we will be holding our phase two consultation. This will present our refined plans as well as the results from our environmental surveys and studies, which will be published in our Preliminary Environmental Information Report (PEIR). This will include detailed landscape and seascape visualisations of the proposals. We anticipate this phase of consultation will take place in spring 2021.

All feedback received together with a clear explanation as to how it has been considered will be presented in our final Consultation Report, which will form part of our DCO application.

 **Have your say**  
via our website.



## Our Environmental Impact Assessment (EIA)

We are undertaking an Environmental Impact Assessment (EIA) of the Extension Projects for both offshore and onshore elements.

An EIA is a process where we assess which impacts the proposed development may have on the environment and local communities. Impacts can be positive or negative and it is our responsibility to seek to enhance positive impacts and reduce negative impacts. Reducing negative impacts can be achieved through project design decisions and also through proposing appropriate mitigation measures.

In order to understand the local environment, the associated potential impact our development may have, and how we can reduce and mitigate impacts, our EIA will include a range of surveys and studies. These surveys will include, but not be limited to, ecology, traffic and transport, archaeology, noise and vibration, land use and visual impact / effect on the surrounding landscape.

We have already begun a series of environmental surveys along the onshore cable corridor and around National Grid Norwich Main Substation, and we are planning to expand our survey programme to include archaeological, traffic and other relevant surveys as well. These will continue until approximately summer 2021.

### Some of the surveys we have completed or are ongoing are:

- A two-year survey program to understand the presence, distribution and abundance of sea birds and marine mammals which has been completed.
- A wintering bird survey which has been completed.
- Pond surveys to assess the presence of great crested newts are underway.
- Our ecology phase one survey will identify the need for further species-specific surveys – this will focus on mapping out habitats along the proposed cable corridor.
- Bat activity surveys / bat roost surveys.
- Traffic counts on selected roads that may be required for construction traffic.
- Baseline noise monitoring at residential areas.
- Baseline photography to show existing views of the preferred substation areas.
- Archaeological geophysical surveys.



Grey seal is an example marine mammal species which will be assessed.



Sandwich tern is an example bird species which will be assessed.



Are there any plant or animal species which you feel are particularly important for us to consider?  
**Have your say** via our website.

1

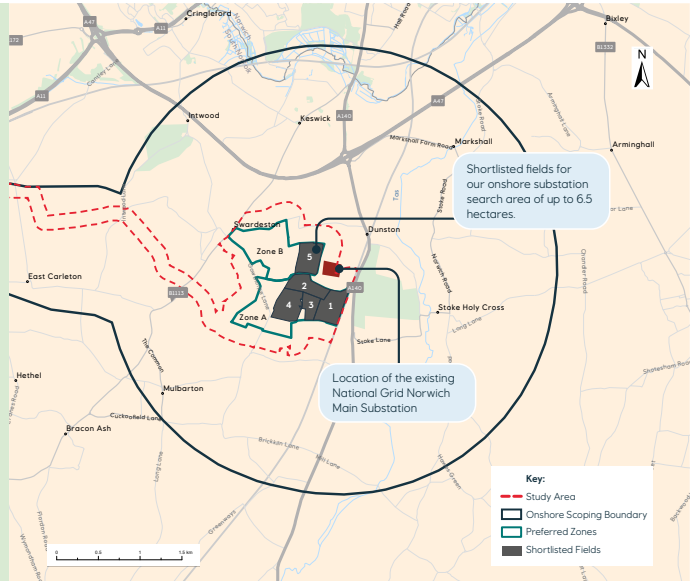
## Our onshore substation search area

Both Extension Projects will connect into the national grid at Norwich Main Substation. Our preferred option is for a joint development, but the DCO application will include the provision for separate onshore substation buildings for each project within the same onshore substation area. This area will be located within a three kilometres (km) (roughly 1.9 miles) radius of the existing Norwich Main Substation.

### Our site selection process

We have been conducting a site selection process to identify a suitable location for our onshore substation area of up to 6.5 hectares and a provisional additional hectare for construction equipment storage. This started with a three km radius search area from the existing National Grid Norwich Main Substation. We then mapped out a set of known environmental and technical constraints in the area to identify suitable zones.

We then compared the constraints within the nine zones, and this resulted in the selection of two preferred zones (A and B) as the most suitable to be able to accommodate the onshore substation area. Within these two zones, we have identified a shortlist of five potential fields, which we are referring to as fields 1-5 for the substation area.



### Our criteria for selecting our onshore substation area:

- Proximity to the existing National Grid Norwich Main Substation
- Transport and access routes
- Public Rights of Way
- Noise impacts
- Visual impact
- Proximity to residential properties
- Impacts to local cultural heritage such as archaeology
- Environmentally designated sites
- Proximity to local conservation areas and Sites of Special Scientific Interest (SSSI)
- Existing and planned high voltage underground electricity cables
- Flood risk

We will be selecting two sites for the onshore substation area following our phase one consultation. We will consult on these two sites at our phase two consultation to then select a final site prior to submitting our DCO application.



We would like to hear what is important to you as we mature our onshore substation area site selection process. **Have your say** via our website.

1

All diagrams, graphics and images in this document are for illustrative purposes only.